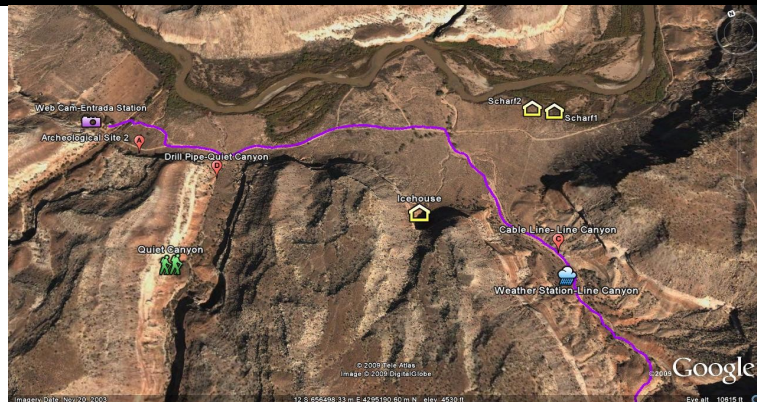


Geospatial Mapping K12 (GMap)

5th Annual Workshop

Oct 18-20, 2013



**Earn 1 semester
U of U or CACTUS
credit**

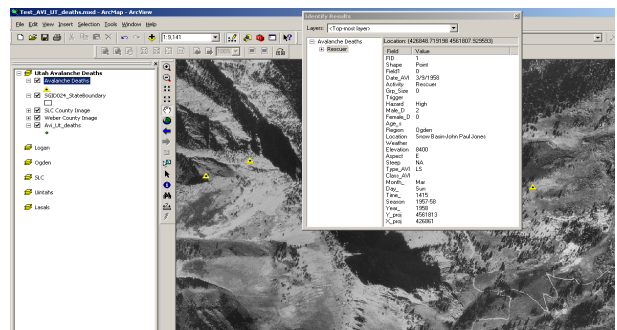
Dates: Oct 18-20, 2013

Locations: Rio Mesa Center (RMC)

<http://www.riomesa.utah.edu>

Meet: Moab 11:30 am on Friday

End: RMC 11:30 am on Sunday



The Geospatial Mapping K12 Teacher workshop is a project- and action-based outdoor workshop that incorporates new science research, current GIS technology (Geographic Information Systems) and community relationships into teacher training and the K-12 classroom curriculum. During the three-day workshop teachers collaborate with scientists to collect, analyze, and map geospatial data on the Colorado Plateau. The project involves mapping two different species of seed harvester ants. *Prerequisite: Complete either a CMAP summer workshop or the ESRI Online Course—Teaching with GIS before attending GMap K12.*

Learning Outcomes:

- Build relationships with local community scientists, leaders, and GIS professionals.
- Analyze real-life issues in the community.
- Use GIS, GPS, and other geospatial technologies to enhance the understanding of issues and facilitate informed decision-making. (New teachers receive a GPS unit.)
- Create GIS maps and data sets for RMC scientists and share them with their students.
- Plan and conduct a geospatial lesson that aligns with state core standards in Geography, Math, and Science, etc.
- Join and post GIS maps, data, and photos to ArcGIS Online and the GMap K12 Wiki .

Contacts: Pat Lambrose lamcox@gmail.com
Theresa Wilson theresa@seschools.org
Donald Feener donald.feener@utah.edu